

Features

- ▶ Industrial Grade PC
- ▶ Desktop 17" Display
- ▶ 19" Rack Mount Option
- ▶ Touch Screen or Mouse/Pointing Device Operated
- ▶ Integrated CPU with 17" High Resolution Color Monitor
- ▶ Dual-Core Intel 1.6GHz/3Gig RAM/120Gb SSD
- ▶ Desktop Industrial Keyboard/Pointing Device
- ▶ DC Powered with Battery Backup
- ▶ Graphic Display of System Conditions
- ▶ Event Display by Color
- ▶ Icons Overlaid on CAD Drawings
- ▶ Zoom Function Capability
- ▶ Complete History Log with Report Generation
- ▶ Password Protection



**PCRA-1 Color Graphic System
Rack Mounted 17" Industrial PC**

Description

The Firecom CGS-7 Color Graphic System is an interactive computer graphic display system designed especially for the life safety industry. The system provides a graphic display of system conditions.

The system receives status information from the LSN-2000 communication network. It collects information from each of the networked nodes of the system. This ensures PCRA-1 operation even if the Fire Command Station is disabled.



The PCRA-1 features an industrial grade PC with a high reliability power supply. A high resolution color 17" touch screen monitor for efficient, fast operation and an optional industrial keyboard that is ideal for wet, dirty and harsh environments is available where a standard PC keyboard won't survive.

All system operations are accomplished through large touch screen graphic switches.

The functions of the graphic switches are controlled through the operating system. Depending upon the status of the life safety system, these switches provide a simple man/machine interface, simple enough for an operator to use in a panic or emergency situation.



Operation

During normal operation of the system, a building plan graphic is displayed on the screen. Additionally, the following information is displayed: Date; Time; Devices in Alarm; Devices in Trouble; and Operator's Name. When an alarm occurs the floor plan is automatically displayed on screen with alarm device flashing red.



All system operations are accomplished through large touch screen graphic switches. The functions of the graphic switches are controlled through the PCRA-1 operational software. Depending upon the status of the life safety system, these switches provide a simple man/machine interface, suited for an operator to use in a panic or emergency situation. Device status is displayed in a list.

WTC Transit Hub Summary View of WTC Hub

2016-03-18T16:03:02

Navigation: Ground Level (19), Upper Transit Hall (17), Transit Hall (15)

Campus	System	Address	State	Event Text	Last Change	Location	Description	Class
WTC	HUB	033-4-100	Alarm Reset	2016-03-18T16:02:52	LEVEL 296	HTD ESCR23 TOP PIT	Smoke Detector	
WTC	HUB	042-2-112	Alarm Reset	2016-03-18T16:02:52	LEVEL 274	HTD ELEV #17 BOTTOM PIT HEAT	Smoke Detector	
WTC	HUB	042-2-113	Alarm Reset	2016-03-18T16:02:52	LEVEL 274	HTD ELEV #16 BOTTOM PIT HEAT	Smoke Detector	
WTC	HUB	042-2-114	Alarm Reset	2016-03-18T16:02:52	LEVEL 274	HTD ESCALATOR #25 BOTTOM PIT	Smoke Detector	
WTC	HUB	042-2-116	Alarm Reset	2016-03-18T16:02:52	LEVEL 274	HTD ESCALATOR #27 BOTTOM PIT	Smoke Detector	
WTC	HUB	042-2-117	Alarm Reset	2016-03-18T16:02:52	LEVEL 274	HTD ESCALATOR #28 BOTTOM PIT	Smoke Detector	
WTC	HUB	081-2-027	Alarm Reset	2016-03-18T16:02:52	LEVEL 274	DSD FAN AC-20	Smoke Detector	
WTC	HUB	081-2-044	Alarm Reset	2016-03-18T16:02:52	LEVEL 274	ASD ELECTRIC CLOSET TH-032	Smoke Detector	
WTC	HUB	081-2-049	Alarm Reset	2016-03-18T16:02:52	LEVEL 274	WFD INSIDE OF STAIR BD TH034	Waterflow Switch	
WTC	HUB	081-2-050	Open	2016-03-18T16:02:52	LEVEL 274	GVS INSIDE OF STAIR BD TH034	Tamper Switch	
WTC	HUB	081-2-054	Alarm Reset	2016-03-18T16:02:52	LEVEL 274	ASD RETURN AIR SHAFT	Smoke Detector	
WTC	HUB	081-2-055	Alarm Reset	2016-03-18T16:02:52	LEVEL 274	ASD A/C ROOM TH-029	Smoke Detector	
WTC	HUB	081-2-056	Alarm Reset	2016-03-18T16:02:52	LEVEL 274	ASD FA CLOSET TH-031	Smoke Detector	
WTC	HUB	081-2-100	Alarm Reset	2016-03-18T16:02:52	LEVEL 296	HTD ESCALATOR #50 TOP PIT	Smoke Detector	
WTC	HUB	081-2-102	Alarm Reset	2016-03-18T16:02:52	LEVEL 296	HTD ESCALATOR #52 BOTTOM PIT	Smoke Detector	
WTC	HUB	081-2-103	Alarm Reset	2016-03-18T16:02:52	LEVEL 296	HTD ESCALATOR #51 BOTTOM PIT	Smoke Detector	

Navigation: Show, Hide, Goto Top, Goto Bottom, Print

System Information: Location: WTC Transit Hub, Detector: Summary View of WTC Hub, Alarm: 0, Supervision: 0, Trouble: 0, Disable: 0, Monitor: 0

Status: System: Online, HUB: Online

PCRA1 Cabinet OK

FIRECOM™, INC.
 39-27 59th Street
 Woodside, NY 11377
 718.899.6100 TEL
 718.899.1932 FAX

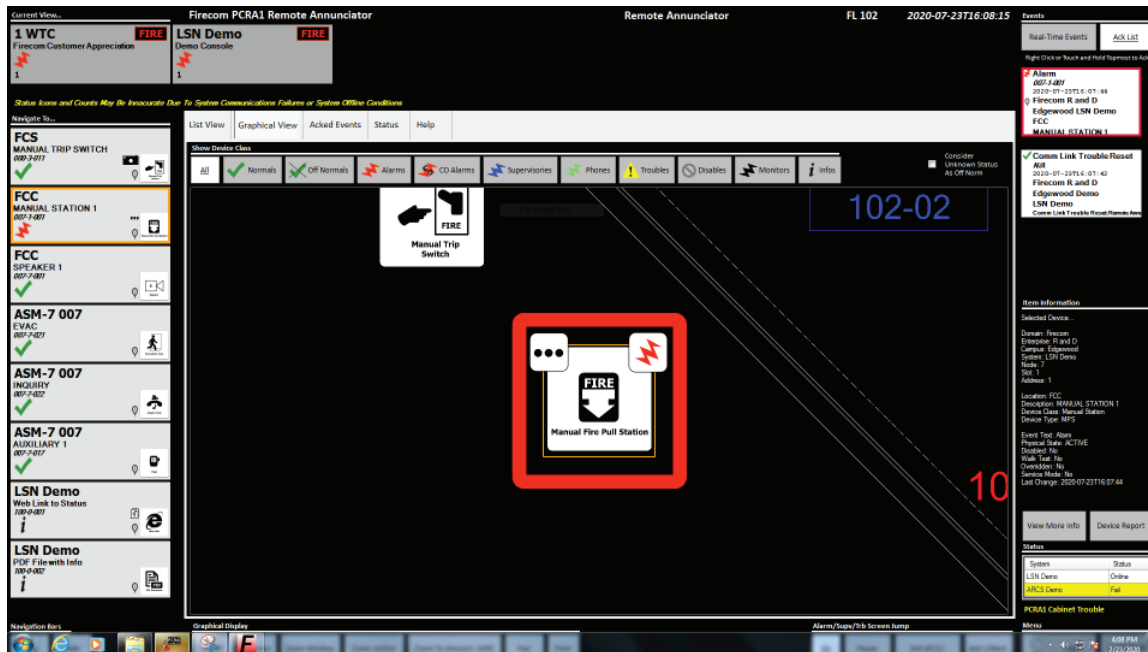


FIRECOMINC.COM

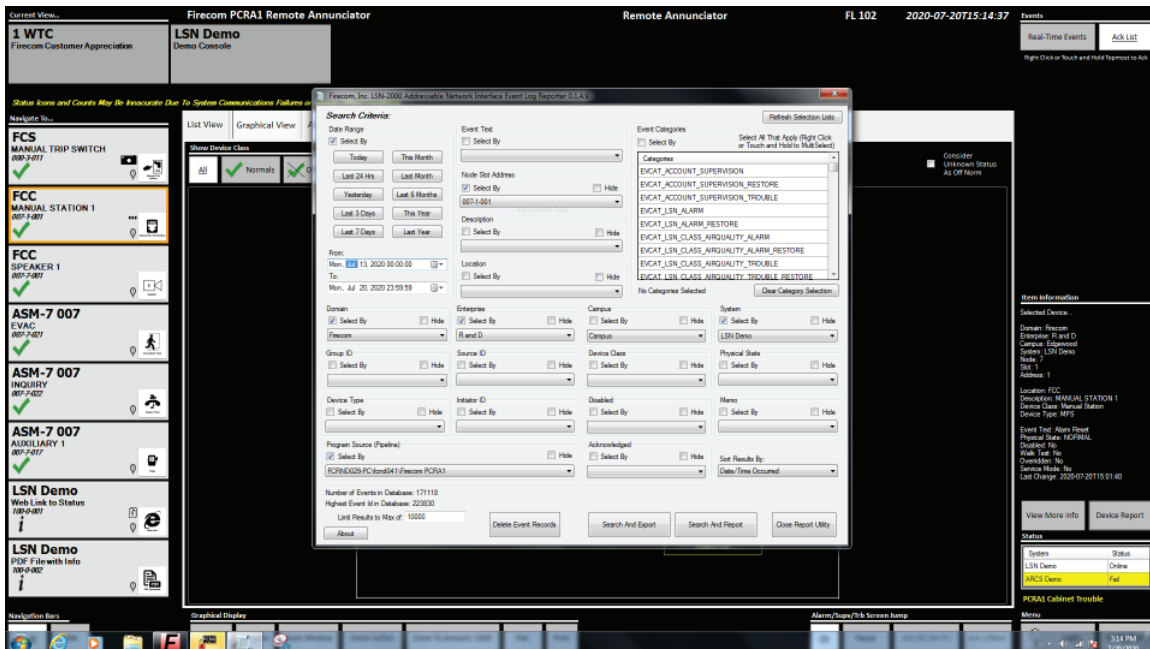
72320
 Rev 200701
 2 of 4

Operation

When a device goes into the alarm state, the map is automatically panned and zoomed to allow the operator to examine where the event occurred.



Additionally, device history can easily be selected and displayed. This allows trends to be analyzed.

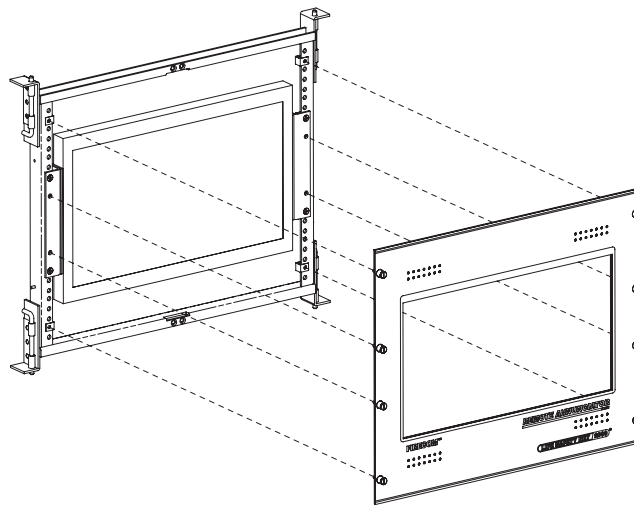


Engineering Specifications

The PCRA-1 software runs on an industrial grade PC with a high reliability power supply. It will be DC powered from the system's power supply which includes an integral battery backup power source. A high-resolution 17" LCD touch screen monitor allows efficient, fast operation and is integrated with the CPU enclosure, eliminating the need for a separate device to be installed. An optional industrial keyboard is ideal for wet, dirty and harsh environments where a standard PC keyboard won't survive. The PCRA-1 system can be ordered in two primary formats: a 19-inch rack mounted configuration or a pedestal-based desktop configuration.



76637 All-In-One 17" Industrial PC Connections



76637 All-In-One 17" Industrial PC With DIS-17 Faceplate

Ordering Information

Model No.	Part No.	Description
PCRA-1-17R	75846	Rack Mounted 17" Industrial PC with PCRA-1 Installed
PCRA-1-17D	75847	Desktop 17" Industrial PC with PCRA-1 Installed
PCIO-8	75849	PC Interface (includes USB Cable)
	72508	Rack Mounted Keyboard with Mouse, Industrial
	72509	Desktop Keyboard with Mouse, Industrial

It is our intention to keep the product information up to date and accurate. We cannot cover all specific applications or anticipate all requirements. All specifications are subject to change without notice. For more information contact: FIRECOM, INC.

FIRECOM™, INC.
39-27 59th Street
Woodside, NY 11377
718.899.6100 TEL
718.899.1932 FAX



FIRECOMINC.COM

72320
Rev 200701
4 of 4